

## Premium & Premium Plus Retrofit Systems – What’s the difference?

At UFH1 we provide two types of retrofit system, ‘Premium’ and ‘Premium Plus’. Both systems are sufficient for complete space heating.

	Premium (Renol1te)	Premium Plus (Variocomp)
Board thickness/material	25mm Extruded Polystyrene 350kPa	18mm Fermacell Gypsum Fibre
Heat Output W/m <sup>2</sup>	Up to 100W/m <sup>2</sup> *	Up to 155W/m <sup>2</sup> *
Pipe spacing	150mm	100mm
Tile directly on to?	Yes, correct primer/adhesive req. enquire for details	Yes, correct primer/adhesive req. enquire for details
Carpet directly on to?	no - ply or similar / screed board / suitable levelling compound required	no – 4-6mm gypsum/ calcium sulphate levelling compound required
Wood/Laminate directly on to?	possible depending on thickness	Yes
Vinyl directly on to?	no - ply or similar / screed board / suitable levelling compound required	no – 4-6mm gypsum/ calcium sulphate levelling compound required
Lowest running temp.	45°C	35°C
Heat pump compatible	Yes**	Yes

\*based on 50°C flow temp. 20°C room temp.

\*\*Heat pump would have to be min flow temp 45°C

**Premium (Renol1te)** - 25mm 350kPa high quality XPS (Extruded polystyrene). Uses 16mm pipe at **150mm spacing**. Produces approximately **(80-100W/m<sup>2</sup>) output**. Not to be confused with any EPS and/or other insulation type systems.

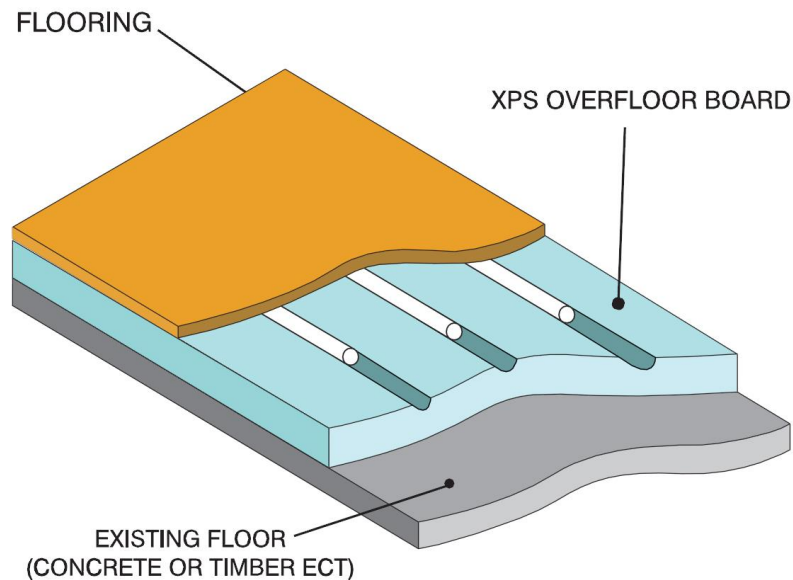
**Premium Plus (Variocomp)** – 18mm Fermacell Gypsum Fibre boards supplied with calcium sulphate filling compound for the ultimate retrofit system. The boards/compound warm up creating thermal mass. System uses 11.6mm pipe at **100mm spacing**. Produces approximately **(130-155W/m<sup>2</sup>)output**. Not to be confused with any EPS and/or non foiled XPS system. **The highest output retrofit system available in the UK!!**

**All of our equipment is tried and tested, installer friendly and incredibly reliable – fit and forget!**

Please note: As a general rule, we do not include materials for unheated areas (i.e. under kitchen units, stairs, fitted furniture etc. etc.). ‘Blank’ un-routed boards are in the optional extras. We include them in the equipment list if requested and/or discussed prior to quoting.

## Floor Constructions

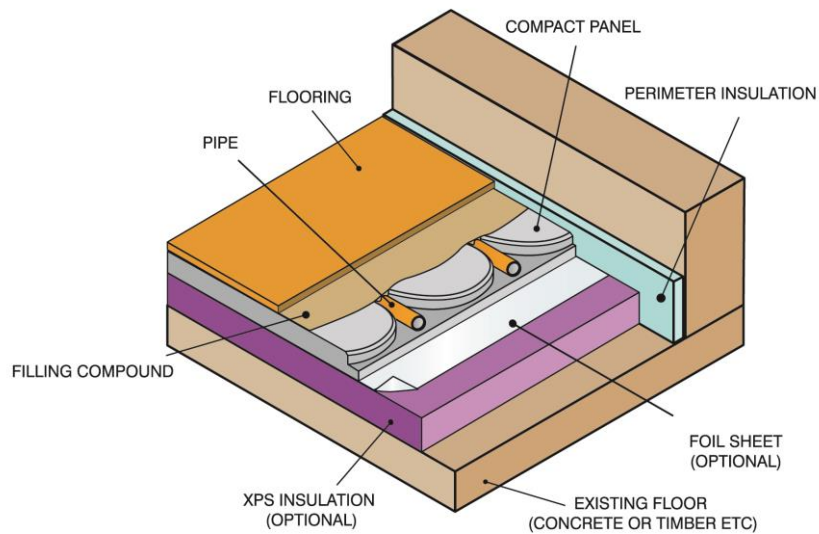
### Premium Retrofit – 25mm XPS System



#### Reasons to choose XPS Floor Heating System

- A panel thickness of just 25mm made from high density, strong XPS (compressive strength of 350KPa), far superior in performance to EPS.
- The boards are insulation, therefore will insulate pipe from the floor below.
- Can be used with any floor covering (maximum Tog rating applies to some products)
- Vinyl/carpet require ply/similar, suitable levelling compound or dry screed board on the first
- Can be tiled or have levelling compound applied directly onto with the use of suitable Mapei products, please enquire for details
- Energy-saving low temperature system
- Low weight - Ideal for renovation of old buildings and installing on existing flooring
- Rapid response time - comparable to radiator heat up times
- Can be used over any floor construction
- Suitable for boilers, heat pumps etc etc

## Premium Plus (Variocomp) Low profile gypsum fibre system



### Reasons to choose VarioComp Floor Heating System

- Super slim! A Panel thickness just 18mm made from Fermacell Gypsum Fibre, far superior in performance to EPS and XPS systems.
- The gypsum boards warm up creating thermal mass unlike EPS and XPS system which insulate the pipes
- Highest performance retrofit system available due to close pipe spacing of 100mm – at least 33% more pipe than any other retrofit system
- Energy-saving low temperature system
- Optimal heat transfer, pipes are fully embedded in the compact filling compound
- Rapid response time – comparable to radiator heat up times
- Can be used over any floor construction
- Can be used with any floor covering (maximum Tog rating applies to some products)
- Suitable for boilers, heat pumps etc etc
- Can be tiled directly onto using recommended primer and Class S1/S2 products
- Floor levelling compound (suitable for use with calcium sulphate) will be required over the filling compound for some floor coverings (vinyl, carpet) – please enquire for recommended products